



FOUNDED 1958

Lynfield College



Prospectus

Principal's Comment



Since 1958, Lynfield College has served the central west Auckland area, developing a reputation as a centre for academic excellence in a safe, caring and positive environment.

With more than 1900 students, we offer a broad curriculum which meets the needs of our diverse learners. We are committed to equipping our students with the skills and resources relevant for success.

As a learning community, we also value education outside the classroom and believe it is important for our students to be actively involved in sports, arts, cultural and leadership opportunities.

We have the confidence and respect of our community. Our academic results are consistently high. Lynfield College has been regularly endorsed by the Education Review Office as a high-performing school.

Thank you for your interest in the school. We look forward to meeting you.

C. M. Knell BSc (Hons), MEdMgt, Dip Tchg
Principal

Mission Statement:
Lynfield College will inspire students to achieve educational excellence through a rich learning and social environment.

Leadership Team

Principal: Ms C Knell BSc (Hons), MEdMgt (Hons), Dip Tchg
Associate Principal: Ms L Ridling MA (Hons), MEdMgt, Dip.Couns, Dip Tchg
Deputy Principal: Mrs G Clark BA, Dip NZAHPER, Dip Tchg (Dist.)
Deputy Principal: Mr S Mouldrey BA, MEd, Dip Tchg
Deputy Principal: Mr R Winn BPHEd, MEdL, Dip Tchg

Learning and Achievement

Lynfield College focuses on offering opportunities for all students to enjoy learning and experience success.

Commitment to learning and achievement is encouraged, supported and celebrated and with the numerous learning pathways available, we have a proud history of consistently high achievement across all curriculum areas. It is expected that all students will remain at school for five years and leave qualified to undertake tertiary studies or enter employment. Progress is monitored closely, with data used extensively to inform and support the advice and guidance available to students and their families.

The Lynfield Learner

The New Zealand Curriculum identifies the development of the qualities of confidence, connectedness, active involvement and lifelong learning as being a national priority for our young people.

In developing our own Lynfield College Curriculum the values underpinning the New Zealand Curriculum and consultation with our parents have led to a vision for the Lynfield Learner being set.

Lynfield College learners are motivated to be:

- confident and independent
- critical and creative thinkers
- positive in relating to others
- literate and numerate



Junior School Programme

Students study a core compulsory programme of English, Mathematics, Science, Social Studies, and PE/Health. In Year 9 students also take Technology, Arts, IT, Business, and Language courses. There is opportunity to begin some specialisation in Year 10, when students must choose two option subjects in addition to their core programme. (The full list of optional subjects is listed in our Course Flow Chart).

This broad-based curriculum approach means students are able to make informed choices when moving into senior school where specialisation is more appropriate for qualification and career aspiration purposes.

Senior School Programme

Years 11, 12 and 13 cater for students of all abilities and the flexibility and exceptional choice of courses means there is an appropriate learning pathway for everyone. Lynfield College offers the National Certificate of Educational Achievement (NCEA) Levels 1, 2, and 3 and the most able students are encouraged to enter Scholarship exams.

At Year 11 most students take six Level 1 courses. The compulsory courses are English, Science, Mathematics, and Health/PE with a wide range of optional courses offered. Advanced Learners are encouraged to take seven courses, and may further develop a multi-level academic programme.

Year 12 students must continue with an English course while the rest of their academic programme is chosen with reference to further education and training intentions. Career and academic guidance assist students as they select the most relevant combination of courses. Work experience opportunities are available for students considering a move into employment. Students may also work towards other National Qualifications as well as gaining work experience through the Gateway programme.

By Year 13 all five courses are optional. Students are again closely guided in their academic programme choices to ensure they give themselves the best possible chance to meet the increasingly competitive entry criteria set by universities and other tertiary education and training providers.



Learning and Achievement

Learning Environment

Lynfield College employs a blended e learning approach to promote effective teaching and learning. Students use their own devices in class to enhance their learning experience

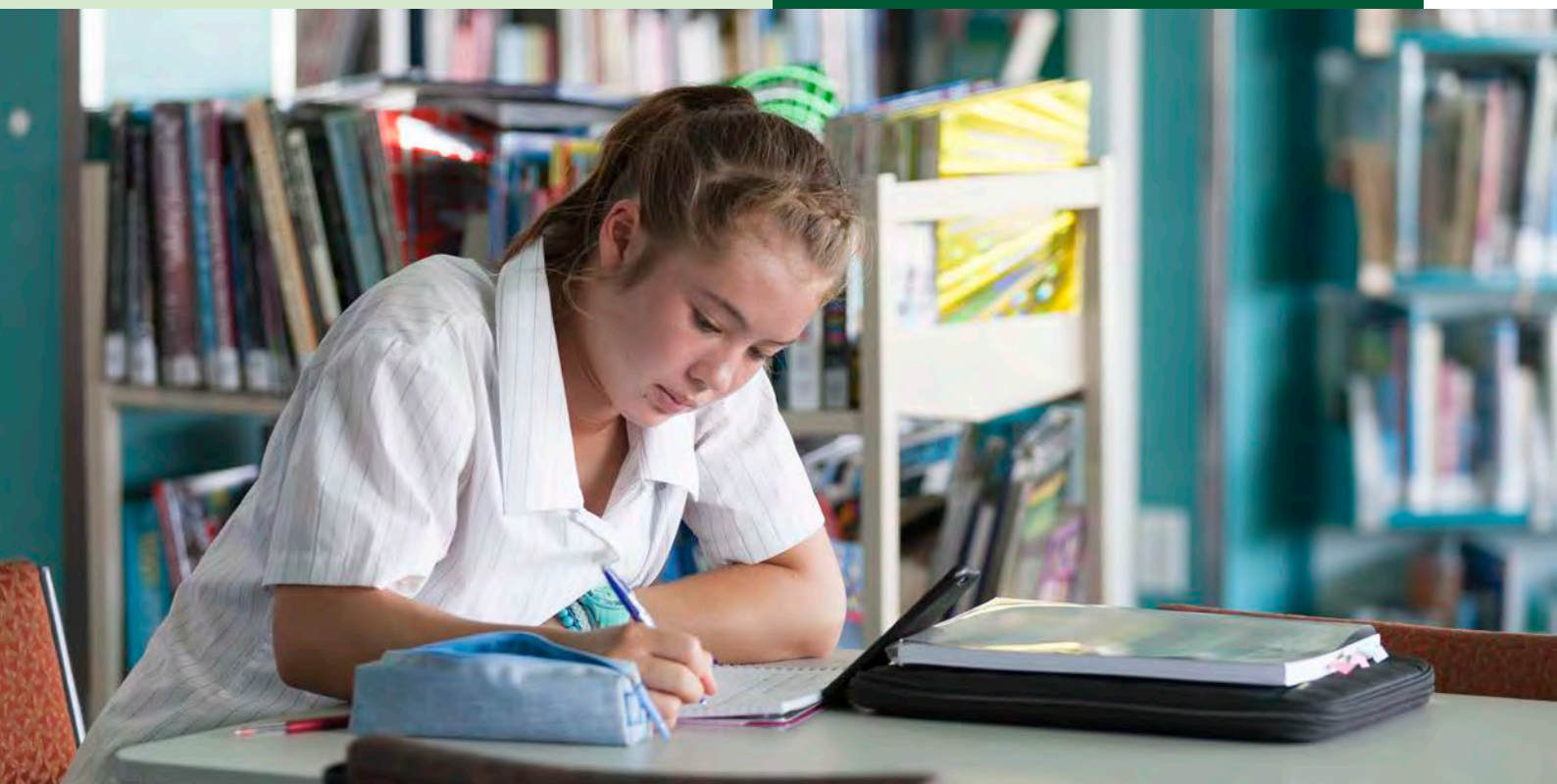
The junior levels at secondary school are important for establishing and growing the skills and attitudes that lead to success in the senior years. The strength and spirit of the College are dependent on all students meeting expectations and engaging positively in the different aspects of school life.

We offer an **Advanced Learner Programme** to the more able students and provide assistance through **Learning Support** to those who require it.

Participation in the challenge of rigorous national and international competitions is offered. Lynfield College is proud of the successes of its students in events across a range of curriculum areas.

Our commitment to excellence is demonstrated through the **Academic Council**. Led by two Academic Captains, this student forum is responsible for keeping learning and the academic life of the College as a high profile for our students.

“Lynfield College is proud of the successes of its students in events across a wide range of curriculum areas.”



LYNFIELD COLLEGE COURSES

Learning Areas	Year 9	Year 10	Year 11 /NCEA L1	Year 12 /NCEA L2	Year 13 / NCEA L3
English	English	English	English	English Media Studies	English Media Studies
ESOL	ESOL	ESOL	ESOL	ESOL	ESOL
Mathematics	Mathematics	Mathematics*	Mathematics*	Mathematics*	Calculus* Statistics
Science	Science	Science*	Science*	Biology* Earth & Space Sci Chemistry* Physics*	Biology* Earth & Space Sci Chemistry* Physics*
Social Science	Social Studies	Social Studies*	History Geography	History Geography Classical Studies Tourism	History Geography Classical Studies Tourism
Business Studies	Business Studies	Business Studies	Economics Accounting	Economics Accounting Business Studies Commerce	Economics Accounting Business Studies Commerce
Health & Physical Education	Physical Ed Health	Physical Ed Health	Physical Ed Health	Physical Ed Outdoor Ed Sports Studies Health	Physical Ed Sports Studies Health
Technology Soft Materials Hard Materials	Soft Materials Hard Materials	Soft Materials Hard Materials Design & Visual Com	Electronics Design & Visual Com Fashion & Design Materials Engineering Cabinetry	Electronics Design & Visual Com Fashion & Design Fashion & Apparel Early Childhood Personal & Community Care Materials Engineering Automotive Carpentry	Electronics Design & Visual Com Fashion & Design Early Childhood Personal & Community Care Engineering Automotive Carpentry
Food	Food & Nutrition	Food & Nutrition	Food & Nutrition Hospitality	Food & Nutrition Hospitality	Hospitality Barista Hospitality Catering Food & Nutrition
Digital	Robotics Computer Applications	Electronics/ Robotics Text info man	Digital Tech	Digital Tech Info Tech Web Programming Design	Digital Tech Programming & Web
Arts Performing Arts	Drama Drama & Dance Dance Music	Drama Dance Music	Drama Music	Drama Dance Music	Drama Dance Music
Visual Arts	Art Pacific Art	Art	Paint & Print Digital Media	Painting Design Photography	Painting Design Photography
Languages	Māori German Japanese Chinese	Māori German Japanese Chinese	Māori German Japanese Chinese	Māori German Japanese Chinese Spanish	Māori German Japanese Chinese
Other	Learning Support	Learning Support	South Pacific Course Learning Support	South Pacific Course Customer Service Gateway Learning Support	Gateway Learning Support

Key: **BOLD** = compulsory subject * Advanced Learner classes available Courses offered each year subject to numbers

Student Services

Providing a Safe Learning Environment

Members of the Lynfield College community work with each other to create a safe and pleasant learning environment. On enrolment students and their parents/ caregivers are required to sign their acceptance of Lynfield College codes of conduct. Physical and emotional safety for self and others is the primary aim of these codes.

Pastoral Care

The College is divided into year level groups, each led by a Dean. The Deans remain with their year level as they progress through the school and are responsible for student enrolment, placement, progress and welfare.

At each year level students are allocated to form classes and meet regularly with their form teacher. In the

junior school, the form teacher may also teach their form class for one of their subjects. Where possible, form teachers remain with their form classes throughout the years. Continuity in pastoral care is recognised as being beneficial for both students and staff.

Pounamu is a vertical form group to which Maori students may belong while Pacific Island students may join their vertical form group.

Counselling Services

Trained, experienced counsellors offer individual and group counselling, career counselling, liaison with tertiary institutions, vocational taster courses, Gateway placements, work experience and learning support. The counsellors have direct access to a range of community.



“ Members of the Lynfield College community work with each other to create a safe and pleasant learning environment. ”

Behaviour Expectations and Responsibilities

At Lynfield College all students are expected to:

- Be treated fairly, with respect and dignity
- Feel safe, valued and connected to the school
- Have people work with them in a co-operative way
- Be spoken to without being put down
- Have others respect their property
- Have their differences valued
- Have others comment positively about their abilities
- Be free from being harassed
 - verbally or physically

At Lynfield College all students have the responsibility to:

- Treat others fairly and with respect and dignity
- Be co-operative and helpful
- Never use physical or verbal abuse
- Refuse to allow aggressive, racist or sexist behaviour to go unchallenged
- Be inclusive of others regardless of gender, race, appearance, physical or intellectual ability
- Value the difference in others
- Be positive about the abilities of others



Beyond the Classroom

Developing interests, skills and passions in activities outside the classroom is a significant aim of Lynfield College and encourages the balanced lifestyle which is the essence of our motto 'Learn to Live'.

“ There is strong participation in individual and team sports by boys and girls at Lynfield College.”

Sport

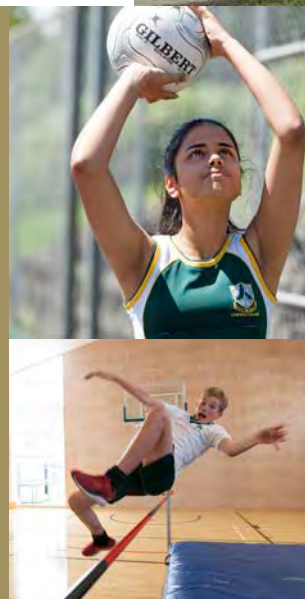
A wide range of stimulating, rewarding and challenging sporting experiences are offered to all students, whether top athletes or beginners. Commitment to their chosen sport is required before a student can wear a Lynfield College sports uniform.

Students have the opportunity to participate in over 25 different summer and winter sports through weekly interschool competitions.

New Zealand Secondary Schools Tournament week and our annual sports exchange with Mt Maunganui are highlights for top teams.

There are six Houses to which students belong and the spirited House competitions generate a healthy rivalry and pride in many extra-curricular College activities.

Individual, team and group achievement is honoured and celebrated at the annual Festival Awards Evening.





Performing Arts

Throughout the year, students participate in a wide range of arts such as music, drama, debating, theatre sports, film and video, and public speaking. Music ensembles provide an opportunity for all levels of music experience and Lynfield College is proud of the recognition our musicians receive. Our premier groups are the Jazz combos, Big Band and Chamber Groups and students of all levels enjoy the Concert and Rock Bands as well as the College Choir. Annual large-scale musical productions build and showcase skills across the full range of performing arts and theatre production.

Cultural Activities

The cultural life at Lynfield College is thriving with involvement in arenas such as Polyfest on an annual basis. Arts Week and Cultural Week are key events on the College calendar and provide opportunity for interaction with our local schools and community. Cultural Week culminates in a Cultural Food and Entertainment Festival which celebrates the cultural diversity of the College students.

Special Interest Groups

Students are able to pursue common interests through participating in a variety of groups such as Philosophy, Writing, Culinary, Human Environmental Rights and Safe Schools. Other groups include our Science Club and Internationally award winning Robotics teams.

Leadership

Developing leadership potential and skills begins at junior levels where mentoring and training assist students in their junior roles on Student Council and in preparation for the numerous senior leadership positions. Leadership training continues in the senior school and the annual Leadership Camp is an intense beginning to the year for those students chosen to lead their peers. As well as Student Executive, Arts and Culture, Academic, Sports and House Captain roles, many students are involved in peer support teams.

International Education

International Students

The international student programme started during the 1980s, and its success has been due to the quality academic courses, excellent support systems and the availability of a wide range of opportunities in and out of school. International students from all over the world choose to study at Lynfield, the majority for the long term, aiming to complete their high school education.

The academic NCEA programmes and qualifications provide students with a pathway to tertiary study both in NZ and overseas. The wide choice and flexibility of subjects offered enable students to select programmes suiting their ability, interest and future plans.

Homestay

The College operates its own homestay programme. Local families have a chance to open their homes to provide the students with a safe, caring environment and give them opportunities to improve their English and experience NZ culture and hospitality. In compliance with the Code of Practice all families must be police vetted and every placement is monitored.

Exchanges

Relationships with overseas schools and organisations have enabled Lynfield students the opportunity to travel overseas to enhance their language learning, experience a new culture and make global connections.

The College's relationship with Shinagawa City, Japan provides Japanese language students with the chance to participate in the Friendship delegation which travels to Shinagawa every two years. Similarly relationships with schools in Germany and China provide reciprocal exchange opportunities.

“Extensive choices in sporting, cultural and community activities offer a variety of experiences.”



School Uniform

Uniform

Lynfield College has a uniform which is to be worn with pride and which features our historic crest and school colours – grey, white, black and forest green. All senior and junior uniform items are stocked in our on-site uniform shop.



“Lynfield College has a uniform which is worn with pride.”

